

### COMPLIES WITH ROLLS-ROYCE MANUFACTURING REQUIREMENTS RRES 90061

The Labino BigBeam Aerospace RRES 90061 is especially designed to meet the manufacturer's requirement from Rolls-Royce. The differences between BidBeam Aerospace RRES 90061 and the regular BigBeam models is:

- Intensity approximately 4 000  $\mu\text{W}/\text{cm}^2$
- Extremely homogenous light beam
- Supplied with test report according to RRES 90061

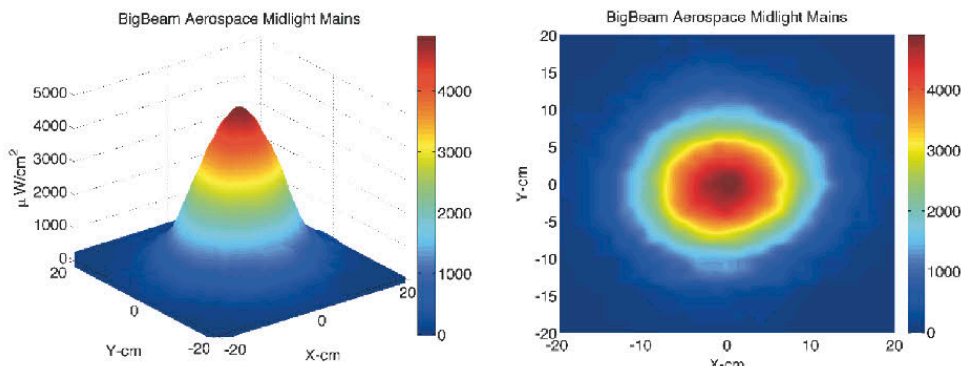
The BigBeam Aerospace RRES 90061 is available both as **DUO operated** (battery-operated with a possibility to operate while charging) and **Mains**. The battery is located inside the hand unit for a cordless operation.

The beam profile is very crucial for the Aerospace industry. This UV light is specially developed to offer a beam that is homogenous – without any footprints showing from the LEDs, shades, dark spots or other disturbing defects in the beam. The edge of the beam is fading out according to the requirements in the Rolls-Royce manufacturer's requirement. See illustrations below.

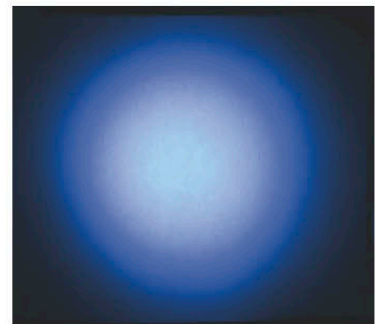


### BEAM PROFILE

Beam profile to illustrate the UV intensity:



Beam pattern (white paper test):



## INCLUDED IN THE BIGBEAM DUO KIT



## INCLUDED IN THE BIGBEAM MAINS KIT



## OPTIONAL ACCESSORIES



## TECHNICAL SPECIFICATIONS:

### Light Beam

- Intensity  $\approx 4\,000\ \mu\text{W}/\text{cm}^2$  at 38 cm (15")
- LED: 9 UV Led
- Wavelength: UV-A, peak at 365 nm
- No UVB
- Approximately 1 Lux / 0.09 Foot Candle<sup>1</sup> (380-780 nm)

### Internal Battery & Charger (DUO)

- 14.8 V Li-ion accumulator
- Running time: 3 hr 30 min +/- 5%
- Charging time while not operating the lamp: approx. 1 hr and 20 min
- Charging time while operating simultaneously via mains: 4 hrs
- Charge from mains via wall socket charger
- Charger: 100-240 VAC

### Mains version

- External Power Supply Unit
- 100-240 volt
- Driver spiral cable: 2 m (fully extended)

### Additional Information

- Weight DUO: 1.7 kilos (3.74 pounds)
- Weight Mains: 1.2 kg (2.64 pounds)
- Housing diameter: 140 mm (5.67 inches)
- Start-up time: Instant-on operation with immediate full power
- Material in housing: anodized aluminium, plastics PA6-30
- Equipped with a current regulator to keep the intensity stable when the battery fades
- Pistol Handle

### Certification

- CE approved
- IP65 classified
- Complies with: RRES 90061